

# C307A/C310A

STATIC SPLIT-DRUM COMPACTOR



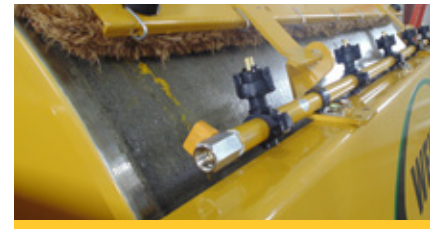
## RANGE OF APPLICATIONS.

When static compaction is required, the 7 ton (6.35 mt) and 10 ton (9 mt) models perform in a wide range of applications from highway construction to driveways, base to finish layers. Linear force is easily adjusted by adding or reducing ballast in the drums.



## SPLIT FRONT DRUM

The 50" (1270 mm) split front drum enables the outer half of the drum to rotate faster than the inner half resulting in quick work on corners and curves, without mat tearing.



## PRESSURIZED WATER SPRAY

Two (2) 100 gal (378 L) tanks supply the pressurized feed system with eight (8) intermittent spray settings. Five (5) nozzles and cocoa mats on the front and rear drums provide optimal drum coverage.



## POWER TO PERFORM.

A Cat® C3.4B Tier 4F engine with 74 hp (55 kW) powers both the C307A and C310A to a maximum speed of 10.5 mph (16.9 km/hr) with a 12' 6" (3.8 m) inside turning radius.



## VISIBILITY AND CONTROL.

Dual seats with 5-position pivot steering wheel and low profile hood design enhance operator sight lines. Controls within easy reach of the operator and optional air-suspension seat help reduce fatigue.



## FAST SERVICE.

Plastic fuel tank prevents rusting. Spray nozzles and filters are easily removable by hand. Extended life water pump. Routine service and grease locations are easily accessible.

# C307A/C310A SPECIFICATIONS

<b>C307A BASE WEIGHT</b>	14,080 lb	6387 kg	<b>HEIGHT</b>	107"	2717 kg	<b>MAXIMUM TURN ANGLE</b>	45°	
<b>C307A MAX WEIGHT</b>	20,500 lb	9300 kg	<b>WHEELBASE</b>	132"	3352 mm	<b>INSIDE TURNING RADIUS</b>	12' 6"	3.8 m
<b>C310A BASE WEIGHT</b>	20,160 lb	9144 kg	<b>FRONT DRUM DIAMETER</b>	40"	1016 mm	<b>LOW RANGE MAX SPEED</b>	5.25 mph	8.4 km/hr
<b>C310A MAX WEIGHT</b>	26,580 lb	12 056 kg	<b>FRONT DRUM WIDTH</b>	50"	1270 mm	<b>HIGH RANGE MAX SPEED</b>	10.5 mph	16.9 km/hr
<b>WIDTH</b>	64"	1625 mm	<b>REAR DRUM DIAMETER</b>	53"	1346 mm	<b>WATER TANK CAPACITY</b>	200 gal	757 L
<b>LENGTH</b>	15' 6"	4724 mm	<b>REAR DRUM WIDTH</b>	50"	1270 mm	<b>FUEL TANK CAPACITY</b>	42 gal	159 L

## PERFORMANCE

C307A (7 ton) and C310A (10 ton) models  
Split front drum minimizes mat tearing  
Cat® C3.4B Tier 4F Engine w/ 74 hp (55 kW)  
Maximum speed of 10.5 mph (16.9 km/hr)  
Variable speed fan drive  
40" (1016 mm) diameter, 50" (1270 mm) wide front drum  
53" (1346 mm) diameter, 50" (1270 mm) wide rear drum  
45° maximum turn angle  
12' 6" (3.8 m) inside turning radius  
Optimal ground clearance for loading

## WATER SPRAY SYSTEM

Five nozzles at front and rear for optimal coverage  
Pressurized feed system  
Eight intermittent spray settings  
Two (2) 100 gal (378 L) tanks  
Triple filtered system reduces nozzle clogging  
Spray components feature corrosion resistant materials  
Extended life water pump  
Large water tank fill port  
Easy to clean spray bars  
Nozzles and filters removable by hand  
Front and rear cocoa mats

## OPERATING ENVIRONMENT

5-position pivot steering wheel improves sight lines  
Additional steps and handles for easy entry/exit  
Controls easily within reach of operator  
Low profile hood enhance visibility  
Optional air suspension seat

## SERVICE/MAINTENANCE

Routine service points are easy to access  
Plastic fuel tank prevents rusting  
Fuel and water tanks are easily accessible  
Sealed, braided harnesses protect wires  
Color-coded and numbers wiring

## OPTIONAL EQUIPMENT

Air suspension seat  
Dual water pumps  
Cat® water mat (replaces cocoa mat)  
Work lights

## SALES AND SERVICE

Sold and serviced exclusively through Caterpillar dealers worldwide.

## WARRANTY

12 months standard. Extended warranty available.