

CT3A PNEUMATIC COMPACTOR



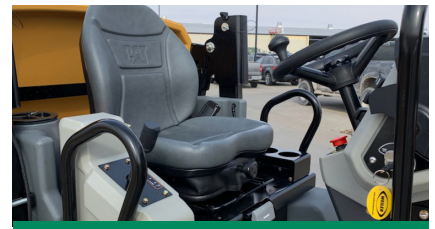
VERSATILE COMPACTION.

The 9-wheeled pneumatic roller provides kneading action for a smooth surface finish with a 60" (1.52 m) compaction width for optimal coverage. Optional 1050lb (476 kg) wheel weight kit available.



SIMPLE OPERATION.

The CT3A is simple and easy to operate with intuitive controls. Operation switches and easy-to-view LCD display provide the operator full control within easy reach of the seat.



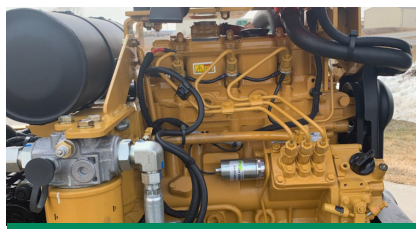
ERGONOMIC DESIGN.

The operator platform is easy to access and features a sliding seat, spacious platform for comfort and control and exceptional views of the tires, machine and jobsite. Optional foldable canopy available.



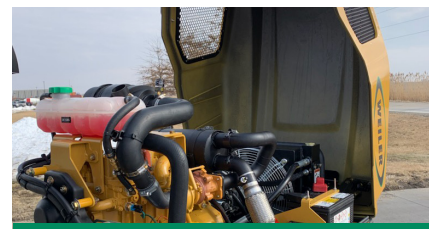
EFFICIENT WATER SPRAY.

The water spray system features a 52 gallon (197 L) water tank for minimal refilling time, variable spray modes for optimal water usage and triple filtration for reliable performance.



PROVEN COMPONENTS.

The CT3A features a C1.7T Tier 4 Final/Stage V engine with 25 hp (19 kW) with variable throttle and electronic engine control for reduced fuel consumption.



UNMATCHED SERVICE AND SUPPORT.

Engine, hydraulic and cooling remote drains are easily accessible. Color coded and numbered wiring simplifies diagnostics. Sales, service and support through the Caterpillar dealer network.



CT3A SPECIFICATIONS

OPERATING WEIGHT	5,020 lb	2268 kg
MAX WT, FRONT DRUM	2,460 lb	1111 kg
MAX WT, REAR DRUM	2,560 lb	1157 kg
LENGTH	101"	2.56 m
WIDTH	60"	1.52 m

WHEELBASE	71"	1803 mm
HEIGHT	106"	2.69 m
COMPACTION WIDTH	60"	1.52 m
CURB CLEARANCE	20"	508 mm
TURNING RADIUS	8'	2.44 m

MAX TRAVEL SPEED	7.4 mph	11.9 km/hr
ENGINE	Cat® C1.7T Tier 4F/Stage V	
HORSEPOWER	25 hp	19 kW
FUEL CAPACITY	17 gal	64 L
WATER TANK CAPACITY	52 gal	197 L

PERFORMANCE

- 9-wheeled pneumatic roller provides kneading action for a tight mat
- 60" (1524 mm) compaction width for optimal coverage
- Cat C1.7T Tier 4 Final/Stage V engine provides 25 hp (19 kw)
- Variable throttle and electronic engine control
- 7 mph (11.3 km/hr) travel speed for quick transport

WATER SPRAY SYSTEM

- 52 gal (197 L) water tank minimizes down time for refilling
- Variable spray modes optimize water usage
- Triple filtration delivers reliable performance
- Self-adjusting, spring-loaded scrapers keep tires clean
- Single drain port simplifies service requirements

OPERATING ENVIRONMENT

- Easy operation with intuitive controls
- Sliding seat and large platform provide comfort and control
- Easy-to-view LCD display and LED lights simplify operation
- Easy folding ROPS can be lowered without tools
- Includes LED strobe light

SERVICE/MAINTENANCE

- Routine service points are easy to access
- Plastic fuel tank prevents rusting
- Fuel and water tanks are easily accessible
- Sealed, braided harnesses protect wires
- Color-coded and numbers wiring

OPTIONAL EQUIPMENT

- Foldable canopy
- Front and rear cocoa mats
- 1050 lb (476 kg) wheel weight

SALES AND SERVICE

Sold and serviced through Caterpillar dealers worldwide.

WEILERPRODUCTS.COM

WARRANTY

12 months standard. Extended warranty available.

