

D460

ROCK DRILL



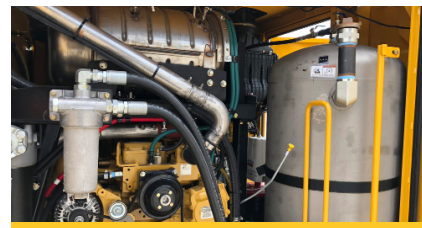
RELIABLE DRIFTER.

The HPR4519 and HPR5123 drifters provide low cost of ownership and reliability through a simple design with high strength materials. Auto lube system along with field serviceability increases productivity.



CAROUSEL ROD CHANGER.

The six rod carousel holds 45 mm and 51 mm diameter rods with a multi-pass hole depth of 102.5' (31 m). The precise positioning function indexes and locks, eliminating switches and sensors that are failure prone due to the elements and vibration.



MORE POWER.

The power group delivers fast cycle times and maximum efficiency with a combination of 364 ft³/min (10.3 m³/min) air capacity, 300 hp (224 kW) Cat® C7.1 engine and an oversized cooler to keep all systems operating at optimal temperatures.



DURABLE COMPONENTS.

The frame and robust undercarriage provide durability for the demands of drilling and navigating rough terrain. The frame supports the upper machine weight with excellent maneuverability due to its low center of gravity, high ground clearance and independent track oscillation.



OPERATOR COMFORT.

The cab provides a quiet and comfortable work environment for drill operation. The cab features superior safety features, high visibility safety glass and responsive controls that minimize fatigue.



FAST SERVICE.

Maintenance friendly designs feature safe and efficient service access with logically located components. Caterpillar dealer service and support keep your machine up and running.

D460 SPECIFICATIONS

GENERAL SPECS

HOLE DIAMETER	2.5" - 4.5"	63 - 114 mm
MAX HOLE DEPTH	102.5'	31 m
ENGINE	Cat® C7.1 Tier 4F	
HORSEPOWER	300 hp	224 kW
COMPRESSOR	350 ft³/min	9.9 m³/min
HPR5123 DRIFTER	31 hp	23 kW

BOOM SYSTEM

BOOM LENGTH	9'	2.7 m
BOOM EXTENSION	5'	1.52 m
BOOM SWING	10° L to 32° R	
BOOM LIFT ABOVE HOR.	50°	
BOOM LIFT BELOW HOR.	29°	
EXT. OFFSET FEED TABLE	3'	0.91 m
FEED SWING	36° L to 37° R	

HPR5123 DRIFTER

OUTPUT ENERGY	31 hp	23 kW
MOTOR TORQUE	1,000 lbf-ft	1356 N-m
WEIGHT	680 lb	308 kg
ROD DIAMETERS	45 mm/51 mm	
BLOW RATE	2500 - 2700 bpm	
PERCUSSION PRESSURE	2,900 psi	200 bar

DIMENSIONS

OPERATING LENGTH	27' 5"	8.3 m
OPERATING HEIGHT	30'	9.1 m
OPERATING WIDTH	10' 6"	3.2 m
TRAMMING LENGTH	34' 2"	10.4 m
TRAMMING HEIGHT	12'	3.6 m
SHIPPING LENGTH	36' 9"	11.2 m
SHIPPING HEIGHT	11' 4"	3.4 m
SHIPPING WIDTH	8' 6"	2.6 m
SHIPPING WEIGHT	45,500 lb	20 638 kg

FEED SYSTEM

STEEL CHANNELS (2)	7"	177.8 mm
PITCH ROLLER CHAIN	1.5"	38.1 mm
GEARBOX DRIVE FORCE	10,000 lb	44 500 N
GEARBOX DRIVE SPEED	121 fpm	36.9 m/min

HPR4519 DRIFTER

OUTPUT ENERGY	25 hp	19 kW
MOTOR TORQUE	670 lbf-ft	908 N-m
WEIGHT	687 lb	12 kg
ROD DIAMETERS	45 mm	
BLOW RATE	2500 - 2700 bpm	
PERCUSSION PRESSURE	2,900 psi	200 bar

UNDERCARRIAGE

GROUSER PADS	15"	380 mm
GROUND CLEARANCE	16"	406 mm
TRACK GAUGE	80"	2032 mm
HIGH TRAM SPEED	2.0 mph	3.2 km/h
LOW TRAM SPEED	1.2 mph	1.9 km/h
TRACK OSCILLATION	±10°	

CAROUSEL ROD CHANGER SYSTEM

ROD LENGTH	12'/14'	3.6 m/4.3 m
ROD DIAMETERS	45 mm/51 mm	
STARTER ROD	20'	6.1 m
SINGLE PASS DEPTH	18' 6"	5.63 m
MULTI-PASS DEPTH	102.5'	31 m

PRODUCTIVITY

Fast cycle times and maximum efficiency with Cat® C7.1 engine
Large capacity air compressor rated at 350 ft³/min (9.9 m³/min)
Carousel rod changer reduces rod change time through fast setups
Carousel rod changer accepts multiple lengths and diameters of steel
Unique gate design keeps a rod in position, ready to load
Electronics free rod changer eliminates sensors and switches
Hammers are powerful, durable and serviceable on the boom
Two (2) hammer sizes to meet most common application needs
High capacity dust collection system is easy to clean and service
System monitors main hydraulic systems and auto adjusts
Auto lube system eliminates manual greasing
Undercarriage is dual tram speed 2.0/1.2 mph (3.2/1.9 km/h)

RELIABILITY

Heavy-duty frame, boom and feed handle rough conditions
Undercarriage is highly maneuverable and durable
Grease lubricated track that reduces track noise and enhances wear life
Long-lasting, field-proven design and components

SALES AND SERVICE

Sold and serviced exclusively through Caterpillar dealers worldwide.

WWW.WEILERPRODUCTS.COM

OPERATING ENVIRONMENT

Cab is quiet and comfortable for relaxed operation
High visibility with 56.4 ft² (5.24 m²) tinted safety glass windows
Climate controlled cab
Air is filtered to the operator
Door window opens for fresh air and communication
Six way adjustment of the operator seat
Dual joystick controls are ergonomic and seat-mounted
Sunlight Readable 10.1" TFT (touchscreen) color LCD display w/Camera

SERVICEABILITY

Organized electrical and hydraulic arrangements
Logically located components for straightforward servicing
Pumps and valves conveniently arranged for service
Quick and easy access to all major servicing points
Multiple safety shutdowns at ground level
Back up camera and viewing monitor enhance visibility
Non-slip, heavy-duty steps and handles

WARRANTY

12 months standard. Extended warranty available.

QEXQ2415