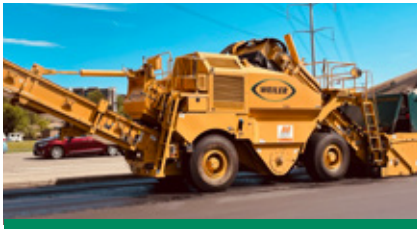


# E1650A REMIXING TRANSFER VEHICLE



## **NON-STOP, NON-CONTACT PAVING.**

With 18 tons (16.3 mt) of onboard storage, triple pitch remix augers and 600 tph (544 mtph) discharge capacity, the E1650A keeps the paving train moving while reducing particulate and thermal segregation for smooth, long lasting roads.



## **MATCH PAVING OUTPUT.**

The variable speed elevator and conveyors allow the E1650A to match plant output while reducing wear. By setting chain speed to match production, the number of revolutions of the chain are reduced and larger packets of mix are carried with each slat, reducing material segregation.



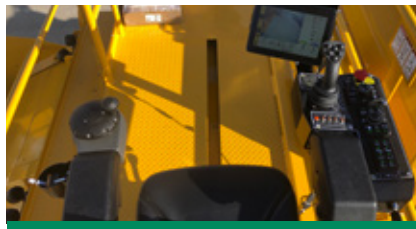
## **NARROW TIRE WIDTH.**

The 8' 6" (2.6 m) width from outside of tire to outside of tire of the E1650A provides room to work for the ground operator. The narrower width, along with 17' (5.2 m) inside turning radius, provides excellent maneuverability on narrow roads.



## **MATERIAL MANAGEMENT.**

The storage hopper management system features a sonic sensor that measures the material in the storage hopper. The paver hopper management system automatically controls the speed of discharge conveyor and storage elevator to maintain a consistent level of material while the distance to paver radar maintains distance between the E1650A and paver.



## **COMPLETE CONTROL.**

The 24" (610 mm) shifting operating platform with ergonomic controls is located at the front of the machine for exceptional visibility and comfort. The operator station shifts side-to-side and features a high-back, heated suspension seat that rotates 357°.



## **DESIGNED AROUND CLEANOUT.**

Full-width, hydraulic drop down floors along with four clam-shell doors for ground level access to the storage hopper and remix augers provide unmatched access for daily cleanout and weekly inspections. With the addition of the optional internal spray down system for chains and sprockets, the E1650A is designed to simplify the critical daily clean-out process.



# E1650A SPECIFICATIONS

<b>WEIGHT</b>	67,200 lb	30 481 kg	<b>HORSEPOWER</b>	250 hp	186 kW	<b>FUEL TANK CAPACITY</b>	110 gal	416 L
<b>STORAGE CAPACITY</b>	18 tons	16.3 mt	<b>TRANSPORT SPEED (MAX)</b>	9 mph	14.5 km/hr	<b>HYDRAULIC TANK CAPACITY</b>	80 gal	303 L
<b>TRANSPORT HEIGHT</b>	11' 5"	3480 mm	<b>WORKING SPEED</b>	202 fpm	61 mpm	<b>TURNING RADIUS</b>	17'	5.2 m
<b>TRANSPORT LENGTH</b>	54' 1"	16 485 mm	<b>CONVEYOR CAPACITY</b>	600 tph	544 mtph	<b>TIRES</b>	High Flotation 18"-25" 28 ply	
<b>TRANSPORT WIDTH</b>	9' 10"	2997 mm	<b>CONVEYOR SLAT WIDTH</b>	36"	914 mm	<b>GROUND DRIVE</b>	4 Wheel Hydrostatic w/ 3 Speeds	
<b>WORKING HEIGHT</b>	15'	4572 mm	<b>ELEVATOR CAPACITY</b>	1,000 tph	907 mtph			
<b>ENGINE</b>	Cat® C7.1 Tier 4F/Stage V		<b>ELEVATOR SLAT WIDTH</b>	56"	1,422 mm			

## POWERTRAIN

- Cat® C7.1 Tier 4F/Stage V Engine with 250 hp (186 kW)
- 4-wheel drive
- Shift-on-the-fly 3-speed hydrostatic drive
- 202 fpm (61 mpm) working speed
- 9 mph (14.5 km/hr) transport speed
- 4-wheel steering standard w/ 17' (5.2 m) turning radius
- Rear steer with crab and coordinating steering and auto center

## OPERATING ENVIRONMENT

- 24" (610 mm) sliding operator platform located at front of machine
- High-back, heated suspension seat w/ 357° rotation
- Dual side dump hopper control stations
- Rear control station for cleanout and hopper insert placement
- 10" (254 mm) color, touch-screen display
- Optional fume extraction system
- Lighted machine egress
- Optional storage hopper management system
- Optional paver hopper insert management system
- Optional distance to paver control
- Optional conveyor auto centering
- Optional camera system w/ 4 cameras and color display

## MATERIAL DELIVERY

- 18 tons (16.3 mt) storage hopper capacity
- 1,000 tph (907 mtph) elevator capacity
- 600 tph (544 mtph) storage and discharge conveyor capacity
- Variable speed elevator and conveyors
- Dump-Assist hydraulic moving floor
- Auto dump hopper cycle
- Heavy-duty, cast dump hopper augers
- Triple-pitch, cast remix augers
- High torque, direct-drive motors
- 55° max conveyor swing in either direction
- Windrow head attachment option

## SALES AND SERVICE

Sold and serviced through Caterpillar dealers worldwide.

## CLEANOUT

- Full-width, hydraulic cleanout doors on elevator/conveyors
- Full-width dump hopper cleanout door
- Four clam shell doors for storage hopper access
- Optional internal spray down system

## SERVICE/MAINTENANCE

- Hydraulic conveyor chain tensioner option
- Chromium carbide wear plate below conveyor foot shaft
- Separated foot shaft bearings
- Large engine access doors
- Ground level fueling
- Braided electrical harnesses and sealed connections
- Color-coded electrical wires
- Optional auto greaser system

## OPTIONAL EQUIPMENT

- Truck hitch
- Windrow head
- Conveyor auto chain tensioner
- AR400 1/4" (6.35 mm) storage hopper liner
- Canopy
- Chromium carbide floor plates
- Separate 60 gal (227 L) tank for tire spray system
- Chain and sprocket internal spray down system
- Tire spray system
- LED work lights (2 head, 6 work, 2 ground and 4 corner strobes)
- LED blade lights
- Truck signal lights
- 12kW generator
- Fume extraction
- Storage hopper level indicator
- Paver hopper management with distance to paver
- Auto center conveyor system
- Camera system w/color display
- Automatic greaser
- 13 (11.8 mt) or 17 ton (15.4 mt) bolt insulated hopper insert

## WARRANTY

12 months standard. Extended warranty available.