

E2850C REMIXING TRANSFER VEHICLE



NON-STOP, NON-CONTACT PAVING.

With 25 tons (22.7 mt) of onboard storage, triple pitch remix augers and 600 tph (544 mtph) discharge capacity, the E2850C keeps the paving train moving while reducing particulate and thermal segregation for smooth, long-lasting roads.



MATCH PAVING OUTPUT.

The variable speed elevator and conveyors allow the E2850C to match plant output while reducing wear. By setting chain speed to match production, the number of revolutions of the chain are reduced and larger packets of mix are carried with each slat, reducing material segregation.



UNMATCHED MANEUVERABILITY.

Rear steer provides an inside turning radius of 15' (4.6 m). The crab and coordinated steering functions return to center with the auto center feature providing enhanced control on tight jobsites and when loading and unloading for transport.



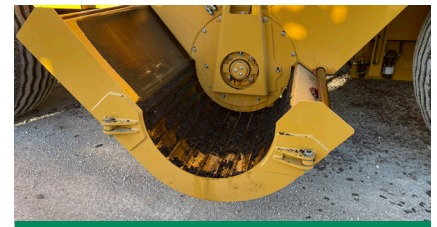
STORAGE HOPPER MANAGEMENT.

The optional storage hopper management system features a proprietary sonic sensor that continuously measures the amount of material in the storage hopper. Two indicator lights allow the entire paving crew to know the material level at all times while the operator can see a percentage readout on the display.



COMPLETE CONTROL.

The 24" (610 mm) shifting, front located operating platform and conveniently located controls provide the operator with excellent visibility and comfort. Optional paver hopper management system, distance to paver and conveyor auto-centering features maximize operation efficiency and production.



DESIGNED AROUND CLEANOUT.

Full-width hydraulic drop-down floors, combined with hydraulically opening storage hopper doors, provide ground-level access to the storage hopper and remix augers, offering unmatched accessibility for daily cleanout and weekly inspections. With the addition of the optional internal spray down system for chains and sprockets, the E2850C is designed to simplify the critical daily clean-out process.



E2850C SPECIFICATIONS

| | | | | | | | | |
|-------------------------|---------------------------|-----------|------------------------------|-----------|------------|--------------------------------|------------------------------------|--------|
| WEIGHT | 72,500 lb | 32 885 kg | TRANSPORT SPEED (MAX) | 10 mph | 16.1 km/hr | HYDRAULIC TANK CAPACITY | 115 gal | 435 L |
| TRANSPORT HEIGHT | 11' 5" | 3.48 m | WORKING SPEED | 194 fpm | 59 mpm | TURNING RADIUS | 15' | 4.57 m |
| TRANSPORT LENGTH | 54' 6" | 16.61 m | CONVEYOR CAPACITY | 600 tph | 544 mtph | TIRES | High Flotation 21"-25" 28 ply | |
| TRANSPORT WIDTH | 9' 10" | 3.0 m | CONVEYOR SLAT WIDTH | 36" | 914 mm | GROUND DRIVE | 4-Wheel Hydrostatic w/ 3 Speeds | |
| WORKING HEIGHT | 16' | 4.88 m | ELEVATOR CAPACITY | 1,000 tph | 907 mtph | | | |
| ENGINE | Cat® C7.1 Tier 4F/Stage V | | ELEVATOR SLAT WIDTH | 56" | 1422 mm | | | |
| HORSEPOWER | 300 hp | 223 kW | FUEL TANK CAPACITY | 150 gal | 568 L | | | |

POWERTRAIN

Cat® C7.1 Tier 4F/Stage V Engine with 300 hp (223 kW)
4-wheel drive
Shift-on-the-fly 3-speed hydrostatic drive
194 fpm (59 mpm) working speed
10 mph (16.1 km/hr) transport speed
Rear steer with 15' (4.57 m) turning radius

OPERATING ENVIRONMENT

24" (610 mm) sliding, front mounted operator platform
High-back, suspension seat with 357° rotation
Dual side dump hopper control stations
Rear control station for cleanout and hopper insert placement
Digital controller for system calibrations
Fume extraction system
Lighted machine egress
Dump hopper landing lights
Optional storage hopper management system
Optional paver hopper insert management system
Optional conveyor auto-centering
Optional distance to paver control
Optional camera system w/ 3 cameras and color display

MATERIAL DELIVERY

25 ton (22.7 mt) storage hopper capacity
1,000 tph (907 mtph) elevator capacity
600 tph (544 mtph) discharge conveyor capacity
Variable speed elevator and conveyor
Dump assist hydraulic moving floor
Auto dump hopper cycle
Heavy-duty, cast dump hopper augers
Triple-pitch, cast remix augers
High torque, direct-drive motors
Insulated conveyor floor
14' 9" (4.5 m) max conveyor swing in either direction
Windrow head attachment option

SALES AND SERVICE

Sold and serviced through Caterpillar dealers worldwide.

CLEANOUT

Full-width, hydraulic cleanout doors on elevator/conveyors
Full-width dump hopper cleanout door
Four clam shell doors for storage hopper access
Two hydraulic remix chamber cleanout doors
Optional internal spray down system

SERVICE/MAINTENANCE

Optional hydraulic conveyor chain tensioner
Chromium Carbide wear plate below conveyor foot shaft
Separated foot shaft bearings
Four large engine access doors
Easily accessible battery compartment
Braided electrical harnesses and sealed connections
Color-coded electrical wires
Optional auto greaser system

OPTIONAL EQUIPMENT

Truck hitch
Windrow head in addition to truck dump hopper
Conveyor auto chain tensioner
AR400 1/4" (6.35 mm) storage hopper liner
Chromium carbide floor plates
Separate 60 gal (227 L) tank for tire spray system
Chain and sprocket internal spray down system
Tire spray system
LED work lights (2 head, 6 work, 2 ground and 4-corner strobes)
LED blade lights
Truck signal lights
12kW generator
Paver hopper management with distance to paver
Discharge conveyor auto-centering
Storage hopper management system
Camera system w/ color display & 3 cameras
Automatic greaser - 45 points
Low profile tires
13 (11.8 mt) or 17 ton (15.4 mt) insulated hopper insert

WARRANTY

12 months standard. Extended warranty available.