

E2860C REMIXING TRANSFER VEHICLE



NON-STOP. NON-CONTACT PAVING.

With 25 tons (22.7 mt) of onboard storage, triple pitch remix augers and 600 tph (544 mtph) discharge capacity, the E2860C keeps the paving train moving while reducing particulate and thermal segregation for smooth, long-lasting roads.



MATCH PAVING OUTPUT.

The variable speed elevator and conveyors allow the E2860C to match plant output while reducing wear. By setting chain speed to match production, the number of revolutions of the chain are reduced and larger packets of mix are carried with each slat, reducing material segregation.



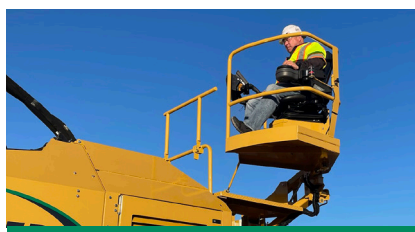
UNMATCHED MANEUVERABILITY.

Rear steer provides an inside turning radius of 15' (4.6 m). The crab and coordinated steering functions return to center with the auto center feature providing enhanced control on tight jobsites and when loading and unloading for transport.



STORAGE HOPPER MANAGEMENT.

The optional storage hopper management system features a proprietary sonic sensor that continuously measures the amount of material in the storage hopper. Two indicator lights allow the entire paving crew to know the material level at all times while the operator can see a percentage readout on the display.



REAR MOUNTED OPERATOR PLATFORM.

The hydraulically adjustable rear mounted operator's platform swings in and out and adjusts up and down providing excellent visibility to the front and rear of the machine. The touchscreen color display gives the operator complete control within easy reach. Optional paver hopper management system, distance to paver and conveyor auto-centering features maximize operation efficiency and production.



DESIGNED AROUND CLEANOUT.

Full-width hydraulic drop-down floors, combined with hydraulically opening storage hopper doors, provide ground-level access to the storage hopper and remix augers, offering unmatched accessibility for daily cleanout and weekly inspections. With the addition of the optional internal spray down system for chains and sprockets, the E2860C is designed to simplify the critical daily clean-out process.



E2860C SPECIFICATIONS

WEIGHT	72,500 lb	32 885 kg	ENGINE	Cat® C7.1 Tier 4F/Stage V	TURNING RADIUS	15'	4.57 m	
TRANSPORT HEIGHT	11' 5"	3.48 m	GROSS POWER	300 hp	223 kW	TIRES	21" - 25" 2.8 ply	
TRANSPORT LENGTH	54' 6"	16.61 m	WORKING SPEED (MAX)	194 fpm	59 m/min	GROUND DRIVE	4-wheel w/ 3 speeds	
TRANSPORT WIDTH	9' 10"	3.0 m	CONVEYOR CAPACITY	600 tph	544 mt/hr	FUEL TANK CAPACITY	150 gal	568 L
WORKING HEIGHT (MAX)	16'	4.88 m	ELEVATOR CAPACITY	1000 tph	907 mt/hr	HYDRAULIC TANK CAPACITY	115 gal	435 L

POWERTRAIN

- Cat® C7.1 Tier 4F/Stage V Engine with 300 hp (223 kW)
- 4-wheel drive
- Shift-on-the-fly 3-speed hydrostatic drive
- 194 fpm (59 mpm) working speed
- 10 mph (16.1 km/hr) transport speed
- Rear steer with 15' (4.57 m) turning radius

OPERATING ENVIRONMENT

- Hydraulically adjustable rear mounted operator platform
- High-back, suspension seat
- Dual side dump hopper control stations
- Rear control station for cleanout and hopper insert placement
- Touchscreen color display w/ integrated camera system
- Optional Fume extraction system
- Dump hopper landing lights
- Optional storage hopper management system
- Optional paver hopper insert management system
- Optional conveyor auto-centering
- Optional distance to paver control
- Optional camera system

MATERIAL DELIVERY

- 25 ton (22.7 mt) storage hopper capacity
- 1,000 tph (907 mtph) elevator capacity
- 600 tph (544 mtph) discharge conveyor capacity
- Variable speed elevator and conveyor
- Dump assist hydraulic moving floor
- Auto dump hopper cycle
- Heavy-duty, cast dump hopper augers
- Triple-pitch, cast remix augers
- High torque, direct-drive motors
- Insulated conveyor floor
- 14' 9" (4.5 m) max conveyor swing in either direction
- Windrow head attachment option

SALES AND SERVICE

Sold and serviced through Caterpillar dealers worldwide.

WEILERPRODUCTS.COM

CLEANOUT

- Full-width, hydraulic cleanout doors on elevator/conveyors
- Full-width dump hopper cleanout door
- Four clam shell doors for storage hopper access
- Optional internal spray down system

SERVICE/MAINTENANCE

- Optional hydraulic conveyor chain tensioner
- Chromium Carbide wear plate below conveyor foot shaft
- Separated foot shaft bearings
- Four large engine access doors
- Easily accessible battery compartment
- Braided electrical harnesses and sealed connections
- Color-coded electrical wires
- Optional auto greaser system

OPTIONAL EQUIPMENT

- Truck hitch
- Windrow head in addition to truck dump hopper
- Conveyor auto chain tensioner
- AR400 1/4" (6.35 mm) storage hopper liner
- Chromium carbide floor plates
- Separate 60 gal (227 L) tank for tire spray system
- Chain and sprocket internal spray down system
- Tire spray system
- LED work lights (2 head, 6 work, 2 ground and 4-corner strobes)
- LED blade lights
- Fume extraction
- Camera system
- Storage hopper management system
- Paver hopper management system w/ distance to paver
- Auto center conveyor system
- Auto greaser
- Low profile tires
- 13 ton (11.8 mt) or 17 ton (15.4 mt) insulated hopper insert

WARRANTY

12 months standard. Extended warranty available.

