



BUILT FOR PRODUCTION.

Engineered and built with versatility in mind, the Weiler P195 incorporates proven designs with new innovations to provide performance, reliability and outstanding mat quality in a wide range of applications.



VERSATILE SCREED.

The Weiler designed screed delivers outstanding mat quality and a wide paving range. The 3' 10" (1.16 m) front mount screed is hydraulically extendable to 7' (2.13 m) and 9' (2.74 m) with bolt-on extensions.



SMOOTH RIDE.

80" (2032 mm) track length with 64" 1625 mm) of ground contact and 125 mm track chain pitch provides smooth ride and excellent flotation. Automatic track tensioning ensures performance and maximizes component life.



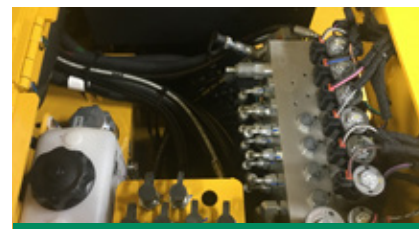
VISIBILITY AND CONTROL.

All controls are located on a single panel within easy reach of the operator. The sliding control console enhances operator ease of use and visibility to either side of the machine.



NARROW DESIGN.

The 46" (1.16 m) track width and 3' 10" (1.16 m) screed allows the P195 to fit within a 4' (1.2 m) cut for a true 4' (1.2 m) paving width. The hopper folds up for an overall machine width of 4' 7" (1397 mm) for simple transport and access to tight working environments.



FAST SERVICE.

Remote grease lines, spray down system with 5 gal (19 L) tank and coiled hoses, three engine access doors and Caterpillar dealer service and support keep your machine up and running with limited down time.

P195 SPECIFICATIONS

WEIGHT	13,000 lb	5896 kg	SCREED WEIGHT	1,800 lb	816 kg	ENGINE	Cat® C2.2 Tier 4F/Stage V	
LENGTH	15'	4572 mm	MAIN PLATE WIDTH	16.5"	419 mm	PAVING SPEED	233 fpm	71 mpm
WIDTH	55"	1397 mm	EXTENSION PLATE WIDTH	9"	228 mm	TRANSPORT SPEED	350 fpm	106 mpm
HEIGHT	69"	1752 mm	SCREED HEAT	Electric - 4 elements		FUEL CAPACITY	25 gal	94 L
TRUCK CLEARANCE	20"	508 mm	VIBRATION	1 x 2500 vpm		HYDRAULIC CAPACITY	30 gal	113 L
AUGER DIAMETER	12"	305 mm	MAX AUGER SPEED	90 rpm		SPRAY DOWN CAPACITY	5 gal	18 L

POWERTRAIN

- Cat® C2.2 Tier 4F/Stage V engine with 74 hp (55 kW)
- 3-Speed hydrostatic drive, 350 fpm (106 mpm) transport speed
- Automatic track tensioning
- 80" (2032 mm) track length with 64" (1625 mm) of ground contact
- 8" (203 mm) performance, poly track pads
- 6 track rollers per side
- 125 mm track chain pitch
- Hydraulically driven 12 kW generator

OPERATING ENVIRONMENT

- Sliding, single control panel
- Push button keypads
- LCD display provides conditions and diagnostics
- Pause mode enables return to same settings
- Steering knob control
- Walkway extensions

MATERIAL DELIVERY

- 7-ton (6.3 mt) hopper
- Replaceable floor plates
- Single conveyor
- Narrow chain guards
- 12" (305 mm) Ni-hard augers
- Variable speed and reversible augers and conveyors
- Adjustable, oscillating and folding push roller
- Independent auger and conveyor control
- Independent hopper control

SALES AND SERVICE

Sold and serviced through Caterpillar dealers worldwide.

SCREED

- 3' 10" (1.16 m) to 7' (2.1 m) standard paving width
- 9' (2.7 m) paving width with bolt-on extensions
- 4 element electric heated screed w/ thermostatic control
- 3/8" (9.5 mm) thick screed plates
- Heated end gates standard
- Grade and slope controls
- Sonic feed sensors
- Manual crown adjustment (+-3%)
- Folding rear walkway

SERVICE/MAINTENANCE

- 5 gal (19 L) spray down system with 2 hoses/nozzles
- Braided electrical harnesses and sealed connections
- 12-volt electric system with automotive-type fuses
- Remote hydraulic diagnostic ports
- Remote grease fittings
- 3 engine access doors
- Lockable vandal covers and engine access doors

OPTIONAL EQUIPMENT

- LED strobe light
- Hand held remote
- Auto grade and slope controls
- LED work lights

WARRANTY

12 months standard. Extended warranty available.