



### **ROTOR OPTIONS.**

Available with either a soil or combination rotor powered by dual planetary drive motors with a max drum speed of 150 rpm. The 78" (1981 mm) wide drum has a max working depth of 14" (355 mm).



### **AUTO DEPTH SET POINT.**

The automatic depth set point feature allows the operator to set the desired rotor depth and return to that same depth with the push of a button on the joystick. Depth reading is visible to the operator on the full color display.



### **AUTO LOAD CONTROL.**

The automatic load control feature monitors system pressures to set ground speed to maximize efficiency of the machine and eliminate overloading the mixing chamber and stalling the rotor.



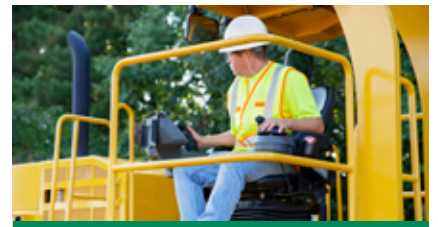
### **REAR STEER OPTION.**

The optional rear steer reduces the turning radius from 37' (11.3 m) to 23' (7 m) for high maneuverability on tight jobsites. The rear steer provides four steering modes: front steer, rear steer, crab steer and coordinated steer and features an auto return to center.



### **MACHINE TILT OPTION.**

The optional machine tilt feature allows the S200 to tilt up to 5° in either direction to match grade conditions and provide excellent gradation in varying applications.



### **COMFORT AND CONTROL.**

The operator seat slides across the platform and rotates 357° providing excellent visibility for the operator. High-back, suspension seat and easy-to-reach controls provide a comfortable working environment with angled ladder access from both sides of the machine.

# S200 SPECIFICATIONS

<b>WEIGHT</b>	42,000 lb	19 051 kg	<b>ENGINE</b>	Cat® C9.3B Tier 4F/Stage V	<b>DRUM DIA. W/ TEETH</b>	48"	1219 mm	
<b>HEIGHT</b>	11' 5"	3480 mm	<b>HORSEPOWER</b>	375 hp	279 kW	<b>DRUM SPEED (MAX)</b>	150 rpm	
<b>LENGTH</b>	27' 8"	8432 mm	<b>TRANSPORT SPEED (MAX)</b>	9 mph	16 km/hr	<b>FUEL TANK CAPACITY</b>	190 gal	719 L
<b>WIDTH</b>	8' 6"	2591 mm	<b>WORKING SPEED (MAX)</b>	180 fpm	55 mpm	<b>HYDRAULIC TANK CAPACITY</b>	90 gal	340 L
<b>WHEELBASE</b>	129"	3276 mm	<b>CUTTING WIDTH</b>	78"	1981 mm	<b>FRONT TIRES</b>	14.9-24 8 PR	
<b>GROUND CLEARANCE</b>	19"	482 mm	<b>CUTTING DEPTH (MAX)</b>	14"	355 mm	<b>REAR TIRES</b>	28LR26 165 LI	

## POWERTRAIN

- Cat® C9.3B Tier 4F/Stage V engine with 375 hp (279 kW)
- Hydrostatic 4-wheel drive with 2 speeds
- 180 fpm (55 mpm) working speed
- 10 mph (16 km/hr) transport speed
- 2-wheel steering standard w/ 37' (11.3 m) turning radius
- Optional rear steer with 23' (7 m) turning radius
- True 4-wheel differential lock
- High flotation tires

## OPERATING ENVIRONMENT

- High-back, heated suspension seat w/ 357° rotation
- Seat slides from side-to-side across platform
- Convenient control locations on single panel
- Angled ladders with dual side access
- Full color display
- Auto load control
- Auto depth set control
- Sun canopy

## ROTOR

- Rear mounted rotor
- Soil (80 tooth) or combination (176 bit) rotor option
- Cat® bits and paddle part numbers
- Dual planetary drive motors
- 78" (1981 mm) cutting width
- 14" (355 mm) max cutting depth
- 48" (1219 mm) rotor diameter with teeth
- Hydraulically adjustable rear rotor gate

## SALES AND SERVICE

Sold and serviced through Caterpillar dealers worldwide.

## SERVICE/MAINTENANCE

- Large engine access doors with gas springs
- Rotor hydraulic bypass for bit changes
- Carbide cutting bits
- Replaceable bit holders
- AR400 rotor skis
- Ground level access to critical components
- LCD display diagnostics
- Braided electrical harnesses and sealed connections
- Color-coded electrical wires

## OPTIONAL EQUIPMENT

- Soil rotor (80 tooth)
- Combination rotor (176 bit)
- Rear steer
- Enclosed cabin with AC/heat and LED work lights
- Tractor leveling
- Emulsion water spray system with push bar
- LED lighting
- Toolbox

## WARRANTY

12 months standard. Extended warranty available.