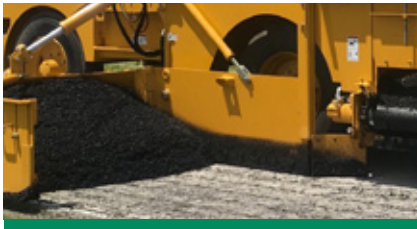


W430B ROAD WIDENER



ONE TOUCH HANDLING.

When it comes to placing the right amount of material at the correct grade and slope in one pass, whether on a shoulder or elsewhere, the best equipment for the job is a Weiler road widener.



MATERIAL DELIVERY.

A 3.2 yd³ (2.4 m³) hopper means fewer truck exchanges during the workday. The 24" (610 mm) wide belt and maximum 400 fpm (121 mpm) belt speed provide quick placement of materials to either the right or left side of the machine.



PRECISE STRIKE-OFF

25" (635 mm) tall strike-off tools widen from 1' (.3 m) to 8' (2.4 m) and are capable of placing material up to 12" (305 mm) above and below grade. Multiple tool sizes plus hydraulically adjustable tools ensure precise strike-off and can be set to exact grade and slope specifications.



RELIABLE POWERTRAIN.

A Cat® C2.8 Tier 4F/Stage V engine with 74 hp (55 kW) powers the front wheel hydrostatic drive with 2-speed motor and 2-speed transmission for 274 fpm (83 mpm) working speed and 11 mph (17.1 km/hr) transport speed.



VISIBILITY AND CONTROL.

All controls are located on a single panel within easy reach of the operator. The operator is located back from the dump hopper and toward the outer edge of the machine for increased visibility.



FAST SERVICE.

Self cleaning pulleys minimize material build-up and large doors enable easy access to engine and machine components. Caterpillar dealer service and support keep your machine up and running with limited down time.



W430B SPECIFICATIONS

WEIGHT	19,500 lb	8845 kg	HOPPER CAPACITY	3.24 yd ³	2.48 m ³	ENGINE	Cat® C2.8 Tier 4F/Stage V	
LENGTH	19'	5791 mm	CONVEYOR LENGTH	10"	3048 mm	HORSEPOWER	74 hp	55 kW
OPERATING WIDTH	10'	3048 mm	CONVEYOR WIDTH	24"	610 mm	TURNING RADIUS	13'	3.9 m
TRANSPORT WIDTH	10'	3048 mm	BELT SPEED	400 fpm	121 mpm	REAR STEER TURN RADIUS	8'	2.3 m
HEIGHT	7' 11"	2441 mm	MAX WORKING SPEED	274 fpm	83 mpm	FUEL CAPACITY	64 gal	242 L
WHEELBASE	117"	2971 mm	TRANSPORT SPEED	11 mph	17.1 km/hr	HYDRAULIC CAPACITY	52 gal	196 L

POWERTRAIN

- Cat® C2.8 Tier 4F/Stage V Engine, 74 hp (55 kW), no DEF
- Front wheel hydrostatic drive
- 2-speed motor
- 2-speed transmission
- 274 fpm (83 mpm) max working speed
- 11 mph (17.1 km/hr) transport speed
- Differential lock on front axle
- 2-wheel steering standard
- 13' (3.9 m) turning radius
- 4-wheel steer option
- 8' (2.3 m) turning radius w/ 4-wheel steer
- Fail safe parking brake
- 385/65R x 22.5, 16 ply front tires
- 11R22.5, 16 ply rear tires

OPERATING ENVIRONMENT

- Tool free sliding control console
- Access to all machine controls from console
- Seats located to the outside of machine
- Tilt control panel
- Wrap around safety rails and kick plates
- USB port

MATERIAL DELIVERY

- 3.24 yd³ (2.48 m³) hopper capacity
- 9' 4" (2844 mm) dump hopper opening
- 10' (3048 mm) long, 24" (610 mm) wide chain-driven conveyor
- Double flashing belt protection
- Left or right material discharge
- 400 fpm (121 mpm) belt speed
- Adjustable push roller

SALES AND SERVICE

Sold and serviced through Caterpillar dealers worldwide.

TOOLING

- 1' (0.3 m) to 8' (2.4 m) widening width
- 12" (305 mm) above and 12" (305 mm) below grade
- 25" (635 mm) tall strike-off tools
- 1' (.3 m), 2' (.6 m) and 3' (.9 m) standard tool
- 6' (1.8 m), 2' - 3' (.6 m - .9 m) and 3' - 5' (.9 - 1.5 m) adj. tool option
- Accommodates large spoil pile and surge capacity
- Standard tool tray
- Side-mounted tool box for accessories

SERVICE/MAINTENANCE

- Multiple engine access doors
- Easily accessible battery compartment
- All valves and cylinders easily accessible
- Doors equipped with anti-theft locks
- Braided electrical harnesses and sealed connections
- Color-coded electrical wires

OPTIONAL EQUIPMENT

- Rear steer
- Truck hitch
- Hydraulically extendable push roller
- LED strobe light
- Spray down system
- Work lights (3)
- Premium LED work lights (5)
- Remote strike-off
- 1,715 lb (778 kg) counterweight
- 12 kW generator
- Grade and slope prep
- Opposite side hydraulics
- 1' (.3 m), 2' (.6 m), 3' (.9 m), 6' (1.8 m) strike-off tools
- 2' - 3' (.6 - .9 m), 3' - 5' (.9 - 1.5 m) telescoping strike-off tool
- Outer edge plate and support

WARRANTY

12 months standard. Extended warranty available.